

# MOIPU

*Upgrade your machine*

## ***Products*** ***2019***



**MOISIO FOREST OY**  
[www.moipu.com](http://www.moipu.com)

# ***Table of contents***

- s. 3      Flex rollers upgrades**
  
- s. 8-13   Moipu-Wheels**
  - s. 4-5   Flex Standard and Aggressive
  - s. 6-7   Steel
  
- s. 3-6    Moipu-Heads**
  - s. 8      M240 EFI
  - s. 9      M310EFI
  - s. 9      M450EFI
  - s. 10     M300 F1
  - s. 11     M300 F2
  - s. 11     M300 F3
  
- s. 12     Lift cylinder guard**
  
- s. 13     Moipu nosturiohjaus**
  
- s. 14-15 Moipu Sorter**

## **Changeable gripping plater**

Before, if flex roller spikes were damaged, it was really difficult to change the gripping plates. You had to grind or machine the welding off from the side plates. Now we have upgraded the Moipu Flex rollers to have bolts attaching the gripping plates. If the pin or the spikes are worn out, just unscrew the bolts holding the gripping plate and change them!

Bolt attachment is the most significant upgrade, but there is more:



## **Improved lifetime**

New Flex roller gripping plates have been bent just a little.

This means that the plate doesn't have to make such large movement.

The movement is 17% less than before. The bolt that is used as an axle gives 20% more bearing surface. Also the bolt is all the way through hard, as the pin before was only surface hardened.

With the lower movement, larger bearing surface and harder axle the lifetime of the feed roller is increased, even in the most demanding environments!

## **Even less spike marks**

Deepest spike mark damage of Flex roller occurs when gripping plates change from one to another. With the bent plates, the feed roller rolls more smoothly and with smaller vibrations. Hits to the tree while rolling is reduced. This also affects the spike marks making them even smaller than before. Enjoy the new Flex roller that rolls more smoothly and keep saw mills and plywood factories even happier than before!

## **Better shape of the roller**

Outer corner of the feed roller is very important, at least in four wheel feeding harvester heads. The outer corner of the roller helps feeding the smallest trees and keeps the largest trees from slipping off the head. In the old Flex rollers the side plate spikes were significantly lower than the gripping plate spikes. Now we have updated the side plate spike in the same level as the gripping plate. In narrow rollers this has brought even 30% more efficient gripping surface for the rollers. New design helps feeding small trees better and keeping large trees from slipping off the head.



**Suberb grip with small spike damages**

***Moipu Flex standard feed rollers are known for their large gripping surface, which results in immense feeding force.***

## **Moipu Flex Standard**

Suberb grip enables you to find cutting window quickly and with small spike damages.

- Low spike marks
- Rubber dampens impacts to your harvester head
- Feed backwards as well as forwards
- Saves your fuel consumption
- Doesn't break tree tops



## **Moipu Flex Aggressive**

Large gripping surface together with aggressive spikes gives maximal traction in every situation.

- Maximum grip
- Holds maximum trees better
- Rubber dampens impacts to your harvester head
- Feed backwards as well as forwards
- Saves your fuel consumption
- Doesn't break tree tops





***Moipu Flex rollers available for the following models:***

[illegible]



***Excellent grip – always***

## ***Moipu Steel***

---

Open structure of Moipu Steel feed roller guarantees that spikes always gets grip no matter how thick the bark. Light weight structure combined with stuck free grip makes this roller excellent choice for all conditions.

- Excellent grip - always
- Stuck free structure
- Doesn't break tree tops
- Lightweight
- Optimized spike distance-> Does not vibrate or get stuck
- Spikes are in straight angle -> feed backwards works as well as feed forward and the rollers will not spin the trees



## Moipu Steel models

Model	Order no	Model	Order no
John Deere 745	15522	Ponsse H6/H7/H8	15097
John Deere 752HD	14952	Rottne 400/405/406	15447
John Deere H270	14432	Rottne EGS 590/595/596	15575
John Deere H290	14650	SP 451/461 LF	13349
John Deere H412	15569	SP 551/561 LF	14364
John Deere H413	15283	SP 661 LF	15339
John Deere H414	15097	SP 761 LF	14417
John Deere H415 Poclain	15418	Valmet 350	15545
John Deere H415 Black Bruin	15408	Valmet 360 Black Bruin	13199
John Deere H480A-C Danfoss	15240	Valmet 360 Poclain	14003
John Deere H480C Poclain	15418	Valmet 365 Poclain	15440
John Deere H754	15333		
Komatsu 340	13349	Waratah HTH240 = John Deere H742	
Komatsu 350	15545	Waratah HTH250 = John Deere H752	
Komatsu 360 Black Bruin	14003	Waratah HTH260 = John Deere 762 A, B, C	
Komatsu 360 Poclain	13199	Waratah HTH270 = John Deere H270	
Komatsu 365	15440	Waratah HTH450 = John Deere 745	
Komatsu C93	15545	Waratah HTH460 = John Deere H754	
Komatsu C123	15440	Waratah HTH470 = John Deere 758HD	
Komatsu C144	15797		
Komatsu S92	14517		
Komatsu S132	13904		
Kesla 18_20_22 RH	15532		
Kesla 25 RH	15535		
Kesla 30 RH	15539		
Logmax 4000	14518		
Logmax 5000	14517		
Logmax 6000	14519		
Logmax 7000	14519		
Logmax 828 _ 928			
Logset 5-6L / TH45-55	15737		
Logset 5-8LMX / TH65-75	15680		
Logset RH65/75 Rexroth	15679		

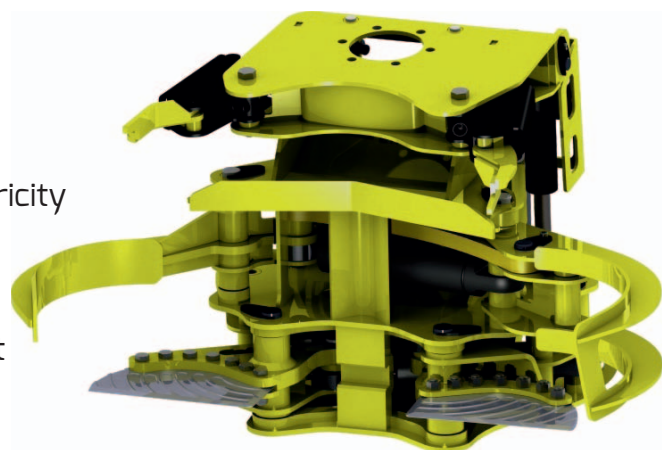




**Easy installation without electricity**

## **M240 EFI**

- Easy to install: only pressure and tank hoses, no electricity
- Small and nimble head
- Fast and effective scissors cut with triangle knives
- Accumulation capacity (5 pieces of 5-7 cm trees)
- Good loading abilities: Large opening and low tilt height



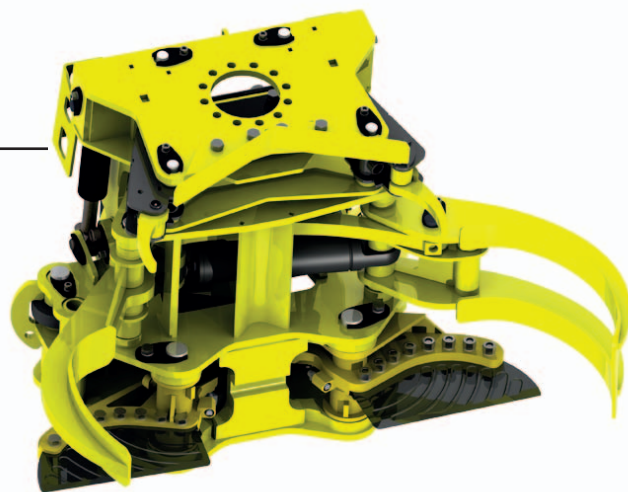
Optimum tree size:	3-25 cm
Delimbing knives open:	106 cm
Delimbing tip to tip:	25 cm (Delimbs by pulling the grapple along the trunk)
Cutting diameter:	25 cm
Frame height:	59 cm
Accumulation open:	70 cm
Weight:	330 kg

Recommended base machines:	tractors, forwarders,
Crane:	46-106 kNm
Hydraulics:	60-100 l/min
	175-250 bar



## M310 EFI

- Strong and durable head for larger forwarders
- Easy to install: only pressure and tank hoses, no electricity
- Powerful cutting knives cut 31cm with one cut
- Accumulation capacity (5 pieces of 5-7 cm trees)
- Good loading abilities: Large opening and low tilt height

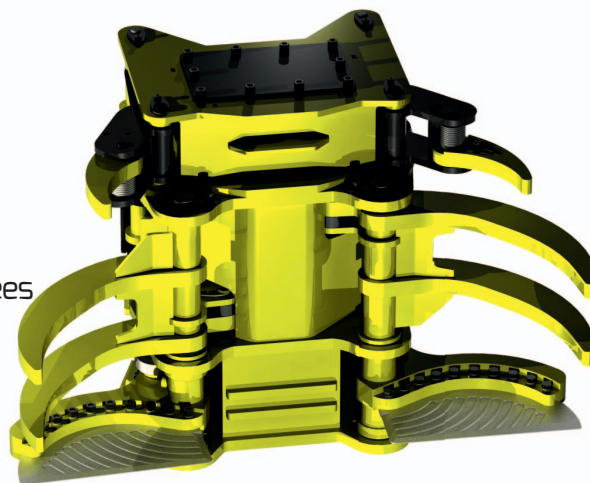


Optimum tree size:	3-25 cm
Karsinta puhtaaksi:	30 cm (pystykarsinta)
Kaato:	31 cm
Delimbing knives open:	106 cm
Frame height:	62 cm
Weight:	460 kg

Recommended base machines:	ajokoneet
Crane:	70-140 kNm
Hydraulics:	60-100 l/min 175-250 bar

## M450 EFI

- Compact and robust energy wood head for excavators
- Cuts 45 cm soft wood and still has fast cutting for small trees
- Easy installation without electricity
- Accumulation capacity (5 pieces of 5-7 cm trees)
- Large opening helps cutting even big bushes



Optimum tree size:	5-35 cm
Knives opening:	130 cm
Cutting diameter:	45 soft wood
Frame height:	94 cm
Weight:	850 kg (without options)
Recommended base machines:	Excavators 12-25t. 120l/min, 250 bar

Options:	- Accumulation - Rotator - NTP-fixtures - S-fixtures
----------	---



## Efficiency for energy and pulp wood harvesting!

### **M300 F1**

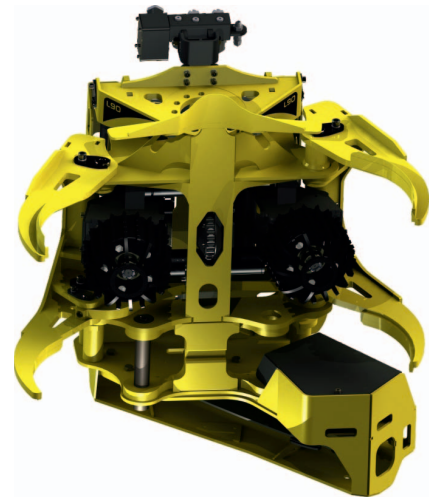
- Heavy duty head, designed for professional use
- Powerful scissors cut with triangle knives
- Big feeding power (17 kN) and speed (5 m/s) rate for size class
- Large opening (130 cm) helps loading and collecting trees
- Wide feed rollers and strong delimbing knives helps multi tree handling and feeding



Optimum tree size:	5-25 cm	Recommended base machines:	forwarders, harvesters, excavators
Delimbing tip to tip:	35 cm	Crane:	100-200 kNm
Cutting diameter:	30 cm scissors with triangle knives	Hydraulics:	120-220 l/min
Feeding speed:	0-5 m/s		200-280 bar
Feeding force:	18,5 kN	Options:	length measurement, diameter measurement, stump treatment, rotator control, bigger cutting cylinders
Delimbing knives open:	130 cm		
Feed rollers open:	35 cm		
Frame height:	100 cm		
Weight:	680 kg		

## M300 F2

- Same good properties like in Moipu 300 F1 model but with chain saw
- Powerful, professional grade saw unit



Optimum tree size:	5-25 cm
Delimbing tip to tip:	35 cm
Cutting diameter:	40 cm saw (automatic saw tensioning)
Feeding speed:	0-5 m/s
Feeding force:	18,5 kN
Delimbing knives open:	130 cm
Feed rollers open:	35 cm
Frame height:	120 cm
Weight:	700 kg

Recommended base machines:

Crane:  
Hydraulics:

Options:

forwarders,  
harvesters, excavators  
100-200 kNm  
120-220 l/min  
200-280 bar  
length measurement,  
diameter measurement,  
stump treatment,  
rotator control  
bigger cutting cylinders

## M300 F3

- Same good properties like in Moipu 300 F1 model but with Dual Cut
- Powerful, professional grade saw unit
- Knife cut saves saw chain when cut small trees and bushes



Optimum tree size:	5-25 cm
Delimbing tip to tip:	35 cm
Cutting diameter:	40 cm saw (automatic saw tensioning) 15 cm veitsi
Feeding speed:	0-5 m/s
Feeding force:	18,5 kN
Delimbing knives open:	130 cm
Feed rollers open:	35 cm
Frame height:	120 cm

Weight:  
Recommended base machines:

Crane:  
Hydraulics:

Options:

700 kg  
forwarders,  
harvesters, excavators  
100-200 kNm  
120-220 l/min  
200-280 bar  
length measurement,  
diameter measurement,  
stump treatment,  
rotator control  
bigger cutting cylinders





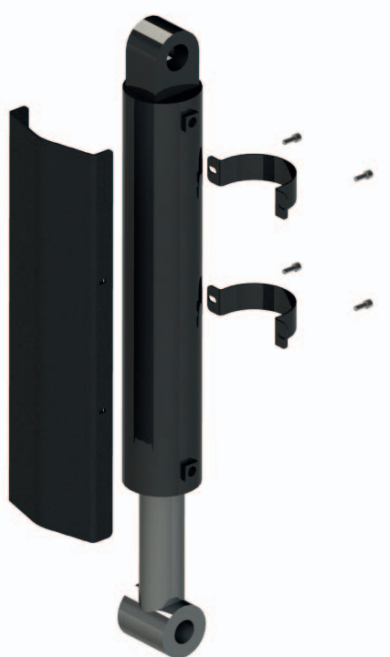
***Protect your forwarder***

## ***Lift cylinder guard for CF cranes***

- Lift cylinder guards can be installed on all John Deere forwarder cranes
- The guards reduce hose failures and protect the cylinder and IBC sensor bar
- Mounting the guard is easy and fast.

### ***Models***

15951	CF1 lift crane guard
15899	CF5 lift crane guard
15949	CF7 lift crane guard
15956	CF75/CF8 lift crane guard



## ***M-Crane Control system***

M-Crane control system can be installed in new machines with cranes or you can upgrade your existing crane control to a new level. Control system includes all modern crane control basic functions in easy to use package. The control system also has an option for reverse camera and weighing system. The control system is affordable and easy to install as it has ready-made wire kits.



### ***M-Crane Control system properties***

- Proportional and ON/OFF signals
- Speed and ramp for every movement can be adjusted
- Settings can be saved for four different drivers
- Joystick calibration and adjustment of neutral zone
- Quick adjust function for quick speed adjustment
- Work time calculator
- Greasing and maintenance alerts
- Diagnostics
- Graphic measurements
- Reports
- Remote Administration
- Securityswitch connection
- parallel mode
- smooth grip mode

### ***Optiot***

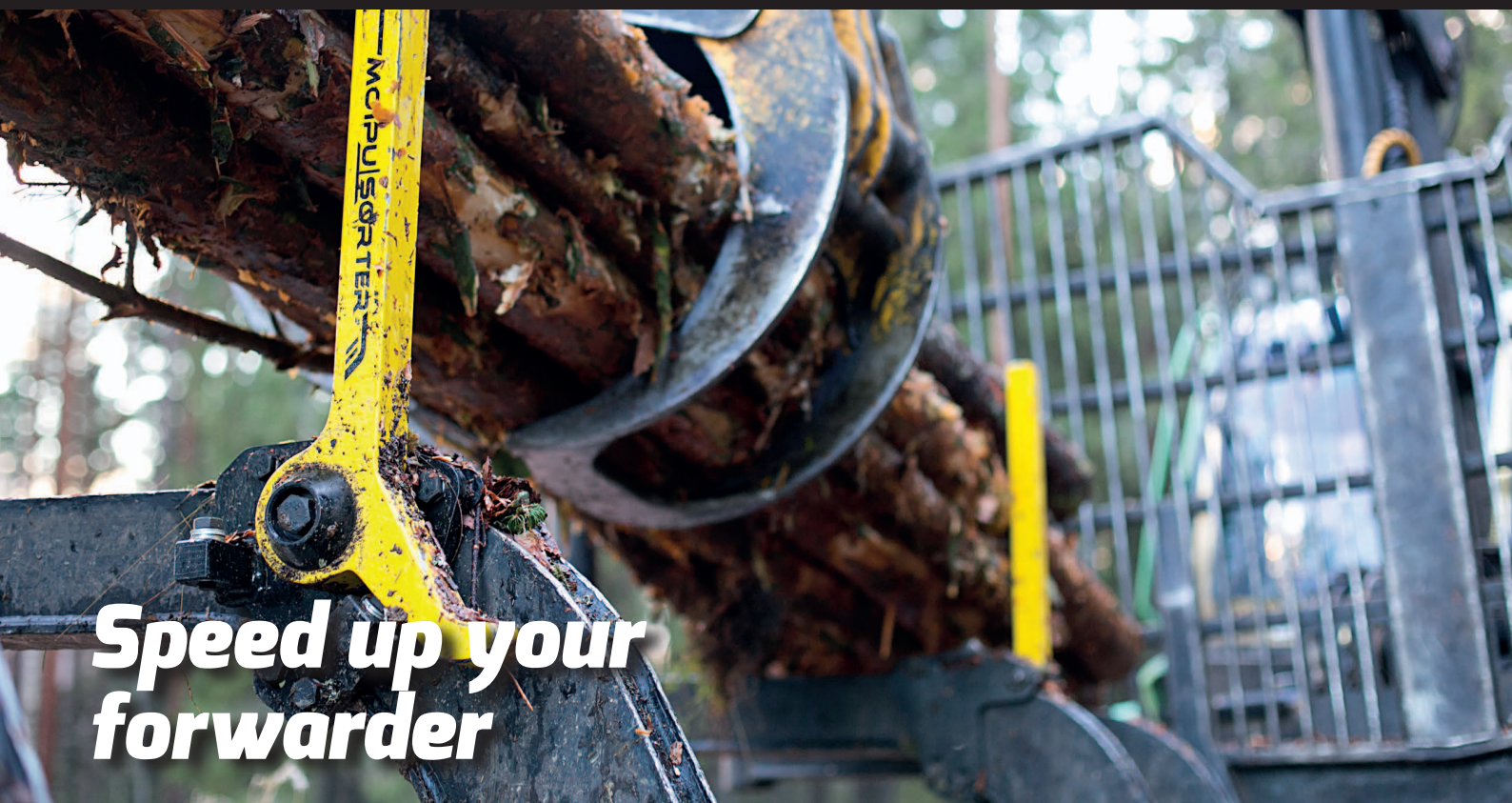
- Reverse camera
- Weighing or other sensor input

### ***M-Crane Control system includes***

- 5,7" touch screen
- Screen brackets
- Cabin module
- Wire kit
- Joysticks

# MOIPU

# -Sorter



**Speed up your  
forwarder**

## ***Moipu Sorter***

With the Moipu Sorter you can easily extend the efficiency of your forwarder. Dividing your loading space enables you to separate different tree assortments in the forest. This way your driving gets faster and easier.

- Makes the forwarder more efficient
- Easy and fast installation in almost all forwarders
- Affordable solution without expensive changes to the loading space
- When the sorting clamp isn't needed, it can be lowered to the side of the bunk.  
This way it doesn't take any room from the loading space
- Position (up - down) of the sorting clamp can be quickly changed with crane using grapple or tree





## Moipu Sorter models

Forwarder	Model	Order no
Ego Log 564C-574C	Sorter 185-205/240	15402
Gremo 1050F	Sorter 125-150/180	14376
Gremo 1250F	Sorter 125-150/180	14376
Gremo 1450F	Sorter 125-150/180	14376
Hultdins ALS	Hultdins ALS	15670
John Deere 810D tube	Sorter 70-95/82	14561
John Deere 1010D	Sorter JD1010D Tube	14547
John Deere 1010D	Sorter 105-130/180	14354
John Deere 1110D	Sorter 105-130/180	14354
John Deere 1410D	Sorter 105-130/180	14354
John Deere 171D	Sorter 145-170/180	14377
John Deere 810E	Sorter 105-115-wide/150	14462
John Deere 1010E	Sorter 145-170/180	14377
John Deere 1110E	Sorter 145-170/180	14377
John Deere 1210E	Sorter 145-170/180	14377
John Deere 1210E VLS	Sorter 185-205/180	14692
John Deere 1510E	Sorter 145-170/180	14377
John Deere 1510E VLS	Sorter 185-205/180	14692
John Deere 1910E	Sorter 185-205-wide/180	14693
John Deere 1910E VLS	Sorter 185-205-wide/180	14693
Komatsu 830	Sorter 80-105/150	14375
Komatsu 840 TX	Sorter 80-105/150	14375
Komatsu 840.1	Sorter Komatsu 840.1	14483
Komatsu 840.2	Sorter 80-105/150	14375
Komatsu 840. 3-4	Sorter 105-130/180	14354
Komatsu 845	Sorter 125-150/180	14376
Komatsu 855	Sorter 125-150/180	14376
Komatsu 860	Sorter 105-130/180	14354
Komatsu 865	Sorter 105-130/180	14354
Komatsu 890.2	Sorter 125-150/220	14690
Komatsu Loadflex	Sorter 160-180/200	14686
Logman 811	Sorter 105-130/150	14378
Logset VLS	Sorter 105-130-slim/150	14493
Logset 4F	Sorter 105-130-slim/150	14493
Logset 5F	Sorter 105-130-slim/150	14493
Ponsse S15	Sorter 70-95/160	14426
Ponsse Bison	Sorter 70-95/160	14426
Ponsse Buffalo < 2012	Sorter 105-130/160	14379
Ponsse Buffalo > 2012	Sorter 105-130/180	14354
Ponsse Elephant	Sorter 105-130/180	14354
Ponsse Elk < 2012	Sorter 105-130/160	14379
Ponsse Elk > 2012	Sorter 105-130/180	14354
Ponsse Wisent	Sorter 105-130/180	14354
Ponsse VLA	Sorter 150-175/180	14592
Sampo FR 28	Sorter 105/130-150	14378
Tigercat 1065	Sorter 160-180/180	14691
Tigercat 1075	Sorter 160-180/180	14691



**Mustasuontie 11  
44500 Viitasaari  
Finland**

**Petrus Moisio  
+358 40-7696 663  
petrus.moisio@moisioforest.com**

**Taneli Moisio  
+358 40-590 3131  
taneli.moisio@moisioforest.fi**

**MOIPU**

*Upgrade your machine*